

High Renaissance Art: Introduction

I chose High Renaissance art because the artwork in this period shows real distinctive details and emotion.

I want to know why the human body was so inspirational to these artists.

I am interested in learning why this art period is called the rebirth of art .

High Renaissance Art: Introduction

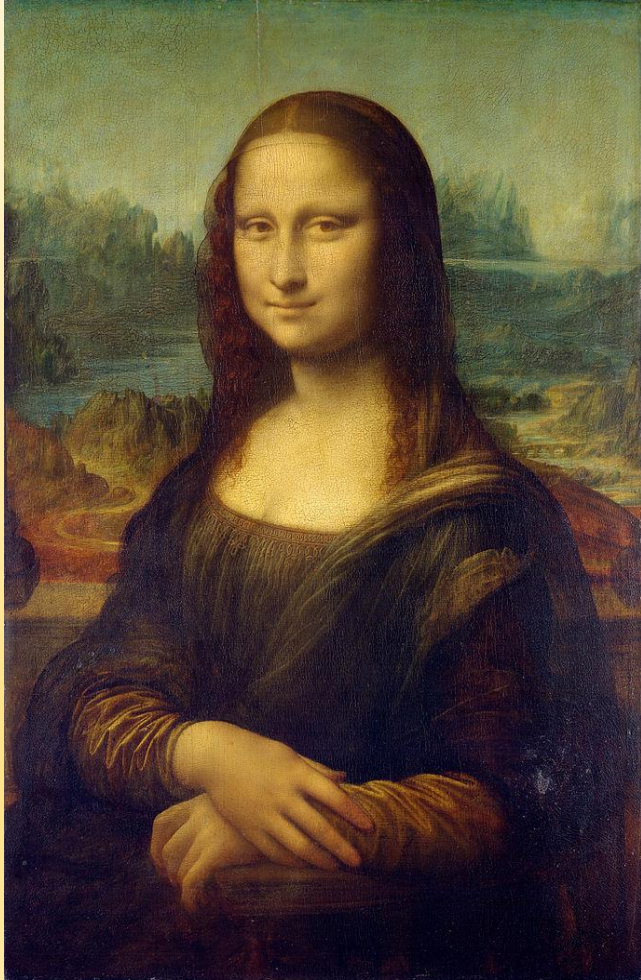
- Renaissance Art was done in Europe from the late 1400s to 1600.
- Separated into three main categories: Early Renaissance, High Renaissance, and Late Renaissance.
- Marked by “logical thought and the new philosophical, literary, and artistic movement called humanism” (Frank, 2014, p. 279).
- Artists studied anatomy and “applied geometry to the logical construction of implied space through linear perspective” (Frank, 2014, p. 281).
- High Renaissance was peak of Italian art from 1490 to 1530 (Frank, 2014).

La Primavera
Sandro Botticelli
1482
Tempera on panel



(Botticelli, ca. 1482)

Mona Lisa
Leonardo da Vinci
1503-1506
Oil on wood



(Da Vinci, ca. 1503)

The Last Supper
Leonardo da Vinci
1495
Paint on plaster



(Da Vinci, ca. 1495)

Adam and Eve
Albrecht Dürer
1504
Engraving



(Dürer, 1504)

Virgin and Child before an Archway
Albrecht Dürer
1495
Oil on panel



(Dürer, ca. 1495)

References

- Botticelli, S. (ca. 1482). *Birth of Venus* [Tempera on canvas]. Retrieved from <http://www.uffizi.org/artworks/the-birth-of-venus-by-sandro-botticelli/>
- Botticelli, S. (ca. 1482). *Primavera* [Tempera on panel]. Retrieved from <http://www.uffizi.org/artworks/la-primavera-allegory-of-spring-by-sandro-botticelli/>
- Da Vinci, L. (ca. 1495). *The last supper* [Oil on canvas]. Retrieved from <http://www.abcgallery.com/L/leonardo/leonardo4.html#note>
- Da Vinci, L. (ca. 1503). *Mona Lisa* [Oil on wood]. Retrieved from <http://www.louvre.fr/en/oeuvre-notices/mona-lisa-portrait-lisa-gherardini-wife-francesco-del-giocondo>
- Dürer, A. (ca. 1495). *Virgin and child before an archway* [Oil on panel]. Retrieved from http://www.wga.hu/html_m/d/durer/1/01/07virgin.html
- Dürer, A. (1504). *Adam and Eve* [Engraving]. Retrieved from <https://www.metmuseum.org/toah/works-of-art/19.73.1>
- Frank, P. (2014). *Prebles' Artforms: An introduction to the visual arts* (11th ed.). Boston, MA: Pearson Education.